

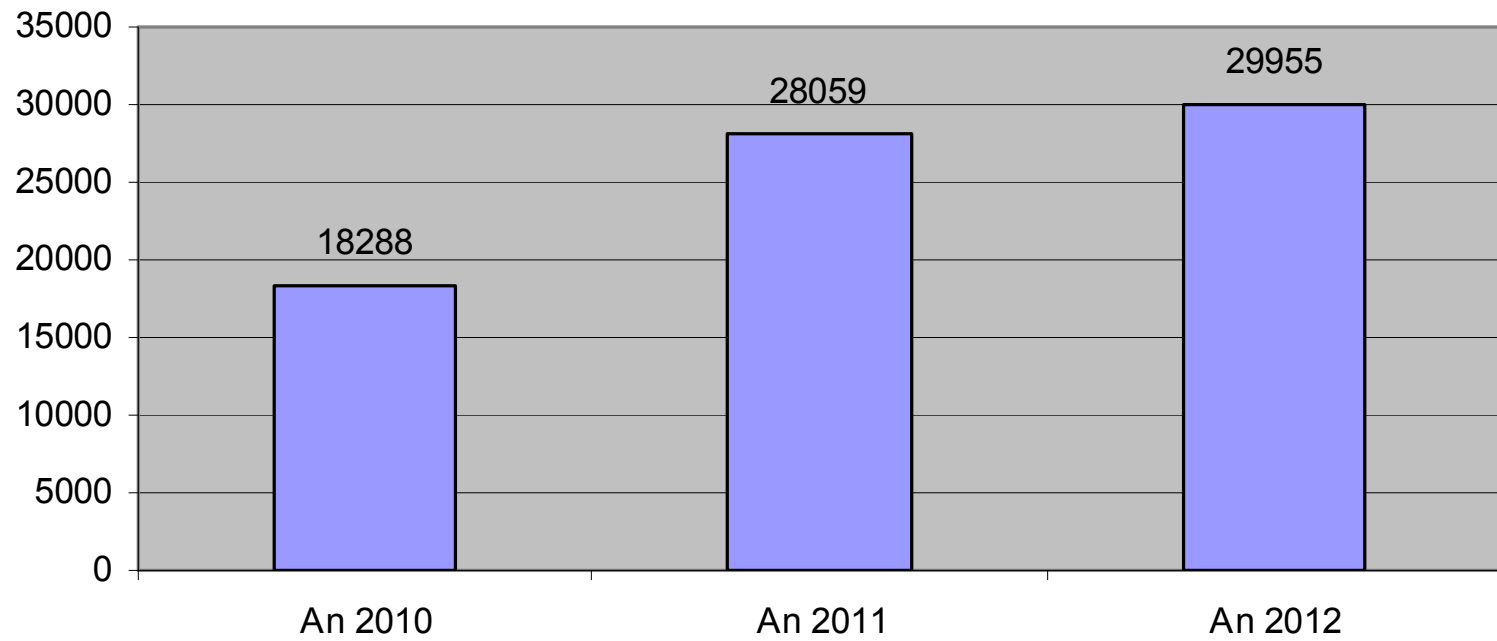
VOLUM DE ACTIVITATE LA INSTANȚELE CURȚII DE APEL CRAIOVA
Ecris 31 dec. 2012

Sectia	Stoc la 2011	N.I.2012	Pe rol	Soluții	Susp.	Stoc la zi 2012	Stoc fara susp.	OP %	T1 2013	NI fără T1	% fără T1	T1Lot	T1 Div
Civil I	5843	9572	15415	13258	630	2157	1527	89,67%	1281	8291	98%		
Civil II	355	1505	1860	1576	20	284	264	85,65%	158	1347	94%		
C.A.F.	2906	15420	18326	13865	352	4461	4109	77,14%	3037	12383	93%	2690	347
Penal	1646	3458	5104	4045	0	1059	1059	79,25%	306	3152	84%		
Total C.A.	10750	29955	40705	32744	1002	7961	6959	82,47%	4782	25173	94%		

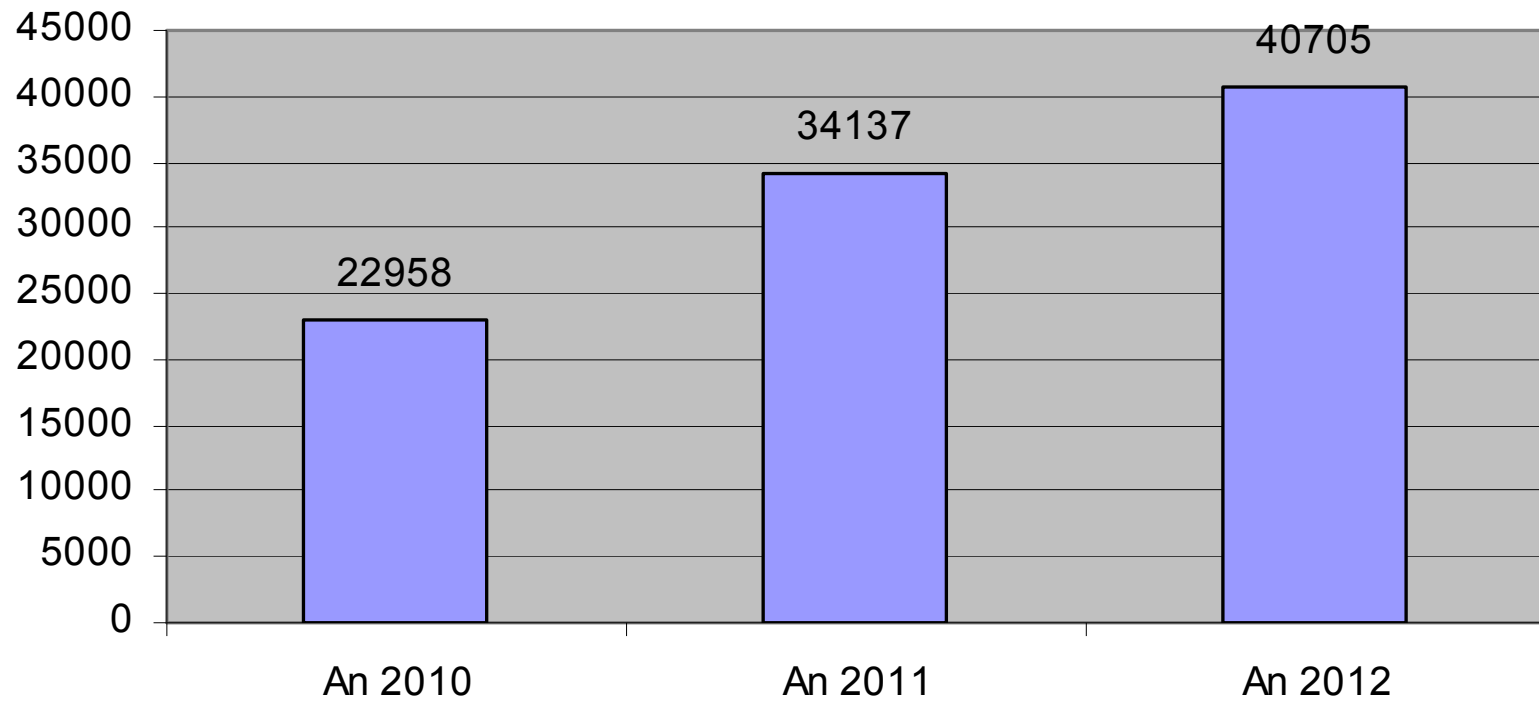
Sectia	Stoc 11	N.I.la zi	Pe rol	Lot	Diverse	Soluții	Lot	Diverse	Op Lot	Op Div %	Stoc	Stoc lot	Stoc Div
		0	0		0	0		0			0	0	0
Civil I	5843	9572	15415	259	15156	13258	35	13223	13,51	87,25	2157	224	1933
Civil II	355	1505	1860	0	1178	1576	0	1576	0	0,00	284	0	284
C.A.F.	2906	15420	18326	8716	9610	13865	5796	4945	66,50	53,41	4461	2920	1541
Penal	1646	3458	5104		5104	4045		4045		79,25	1059	0	1059
TOTAL	10750	29955	40705	8975	31730	32744	5831	26913		84,82	7961	3144	4817

Date statistice - Istoric								
An	Stoc inițial	Intrate an	Total rol	Soluții	Susp	Stoc final	Op. la total	% REAL
An 2004	1006	17284	18290	14382	739	3908	81,94%	
An 2005	3908	18803	22711	20478	730	2233	93,16%	
An 2006	2233	17763	19996	17313	679	2683	89,63%	
An 2007	2683	18615	21298	18790	462	2508	90,18%	
An 2008	2508	22170	24678	20188	541	4490	83,64%	
An 2009	4490	19935	24425	19755	1459	4670	86,02%	
An 2010	4670	18288	22958	16880	1696	6078	79,39%	91,92%
An 2011	6078	28059	34137	24671	2078	10750	76,95%	92,25%
An 2012	10750	29955	40705	32744	1002	7961	82,47%	94%

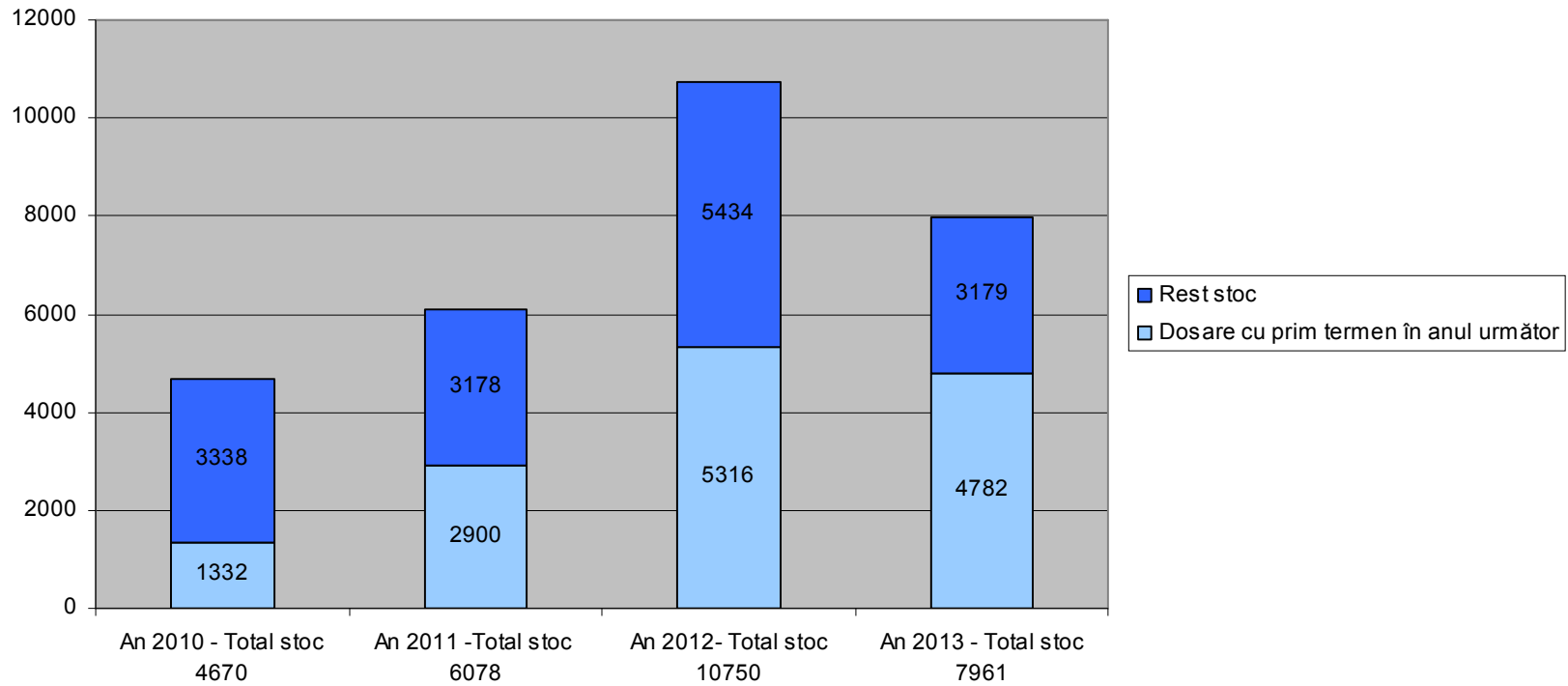
Dosare intrate în cursul anului
comparativ 2010 - 2012



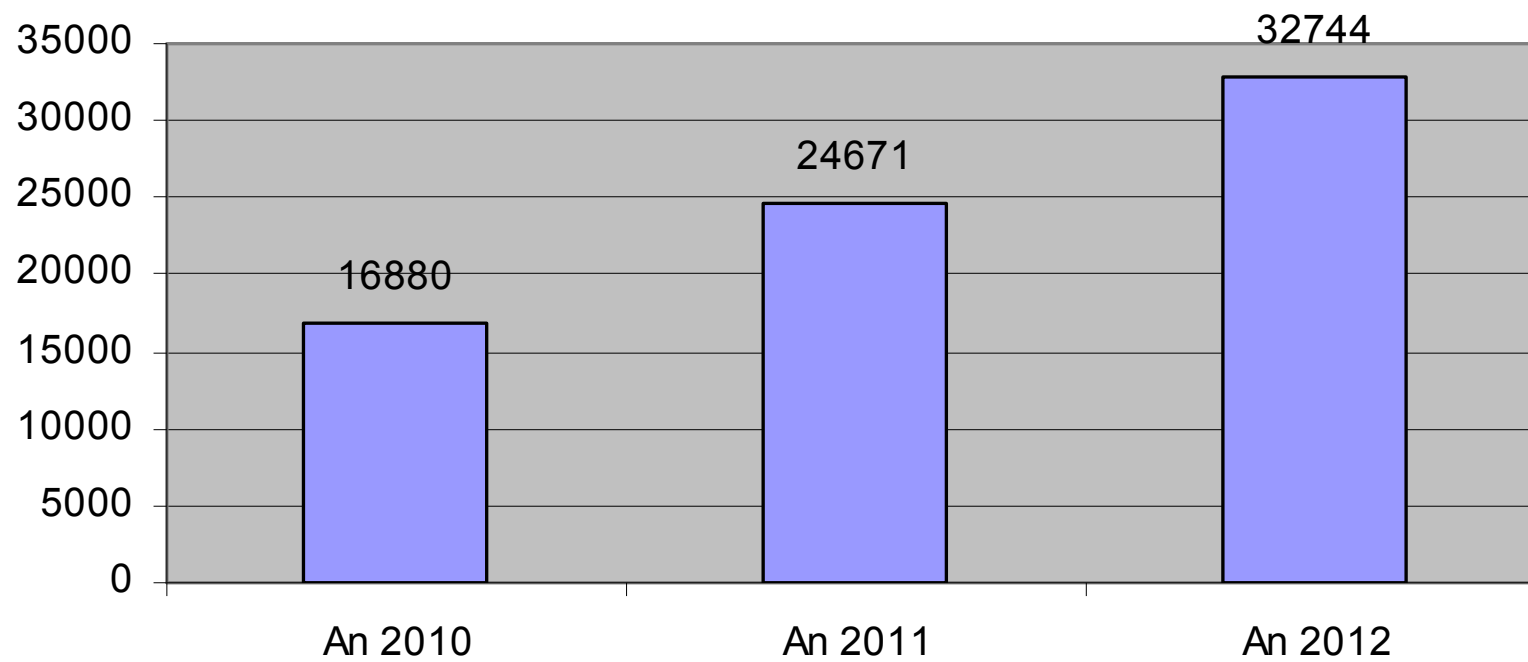
Total rol comparativ 2010 - 2012



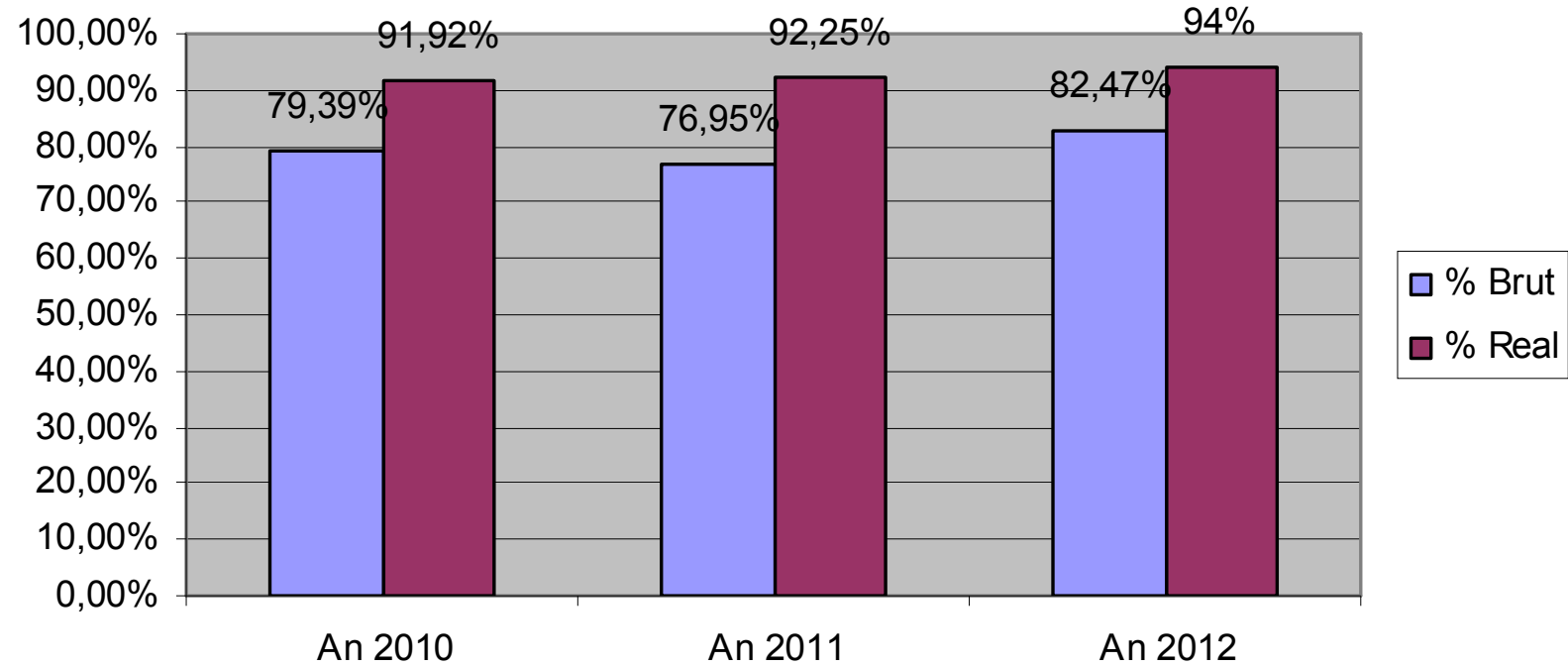
Stoc preluat din anul anterior
Pondere dosare cu prim termen în anul următor



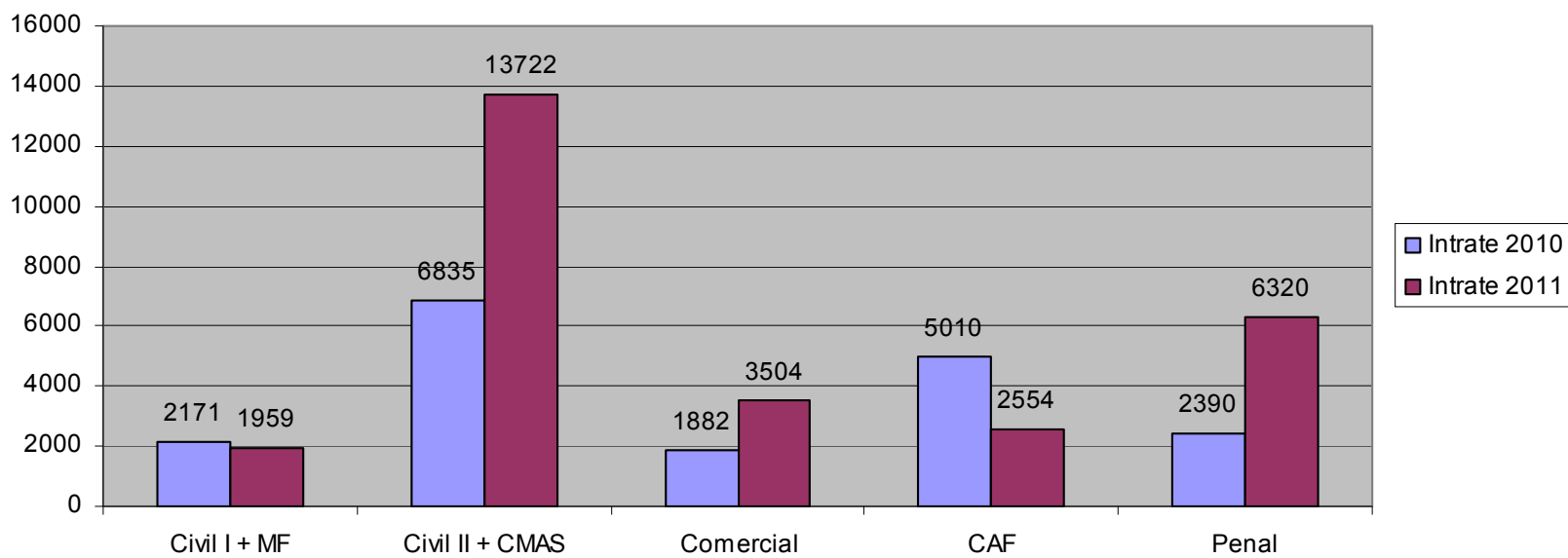
Soluții
situație comparativă 2010 - 2012



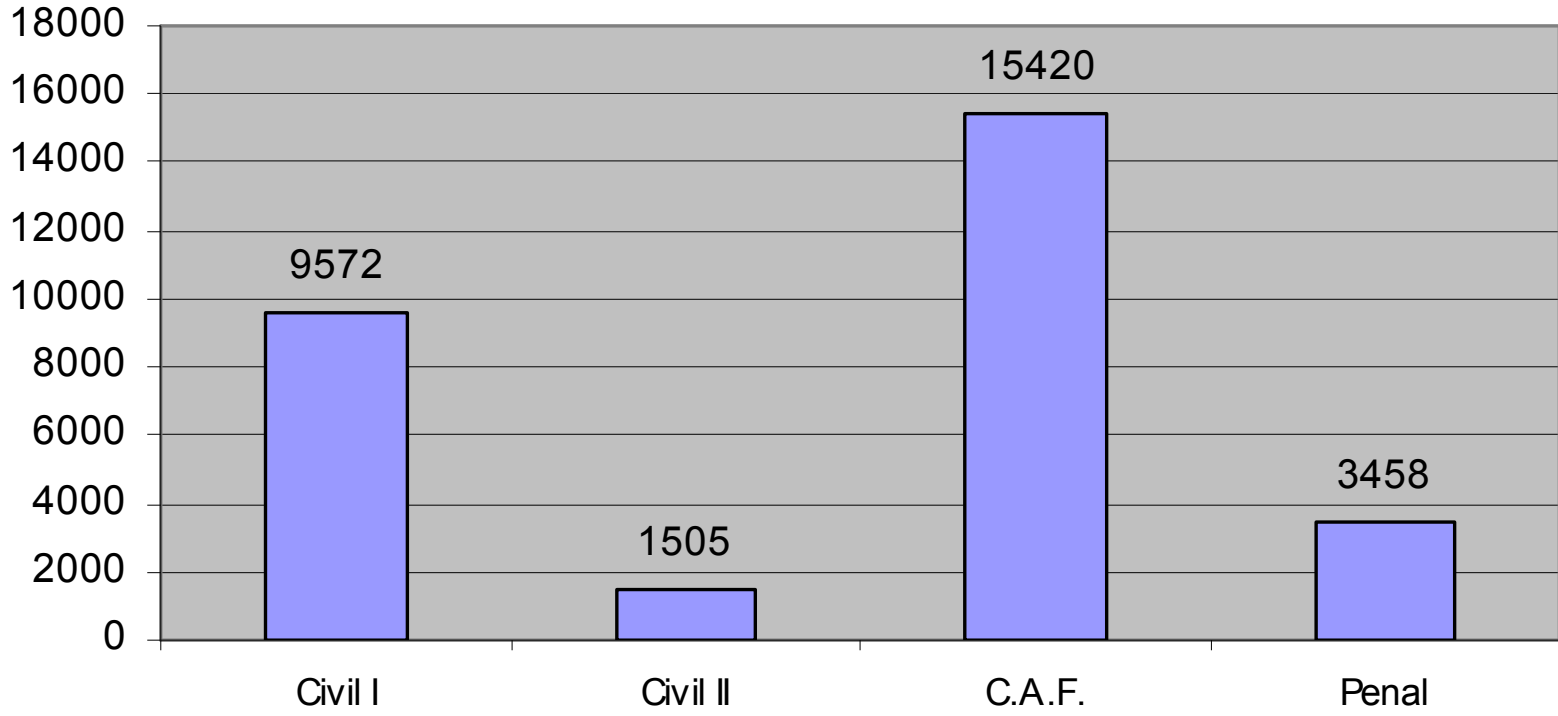
Operativitatea soluționării cauzelor comparativ 2010 - 2012



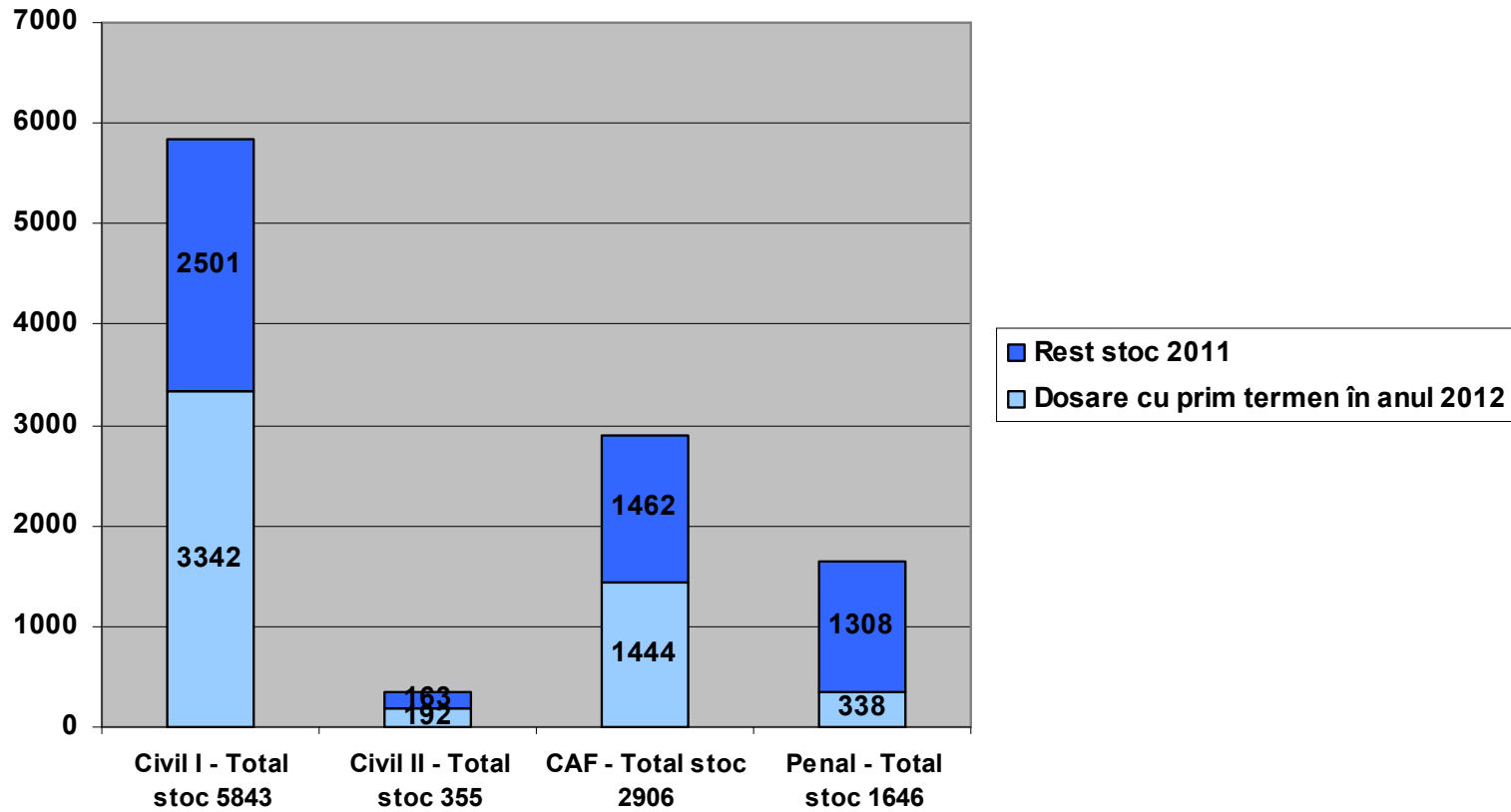
**Dosare Intrate în cursul anului
situație comparativă 2010 - 2011**



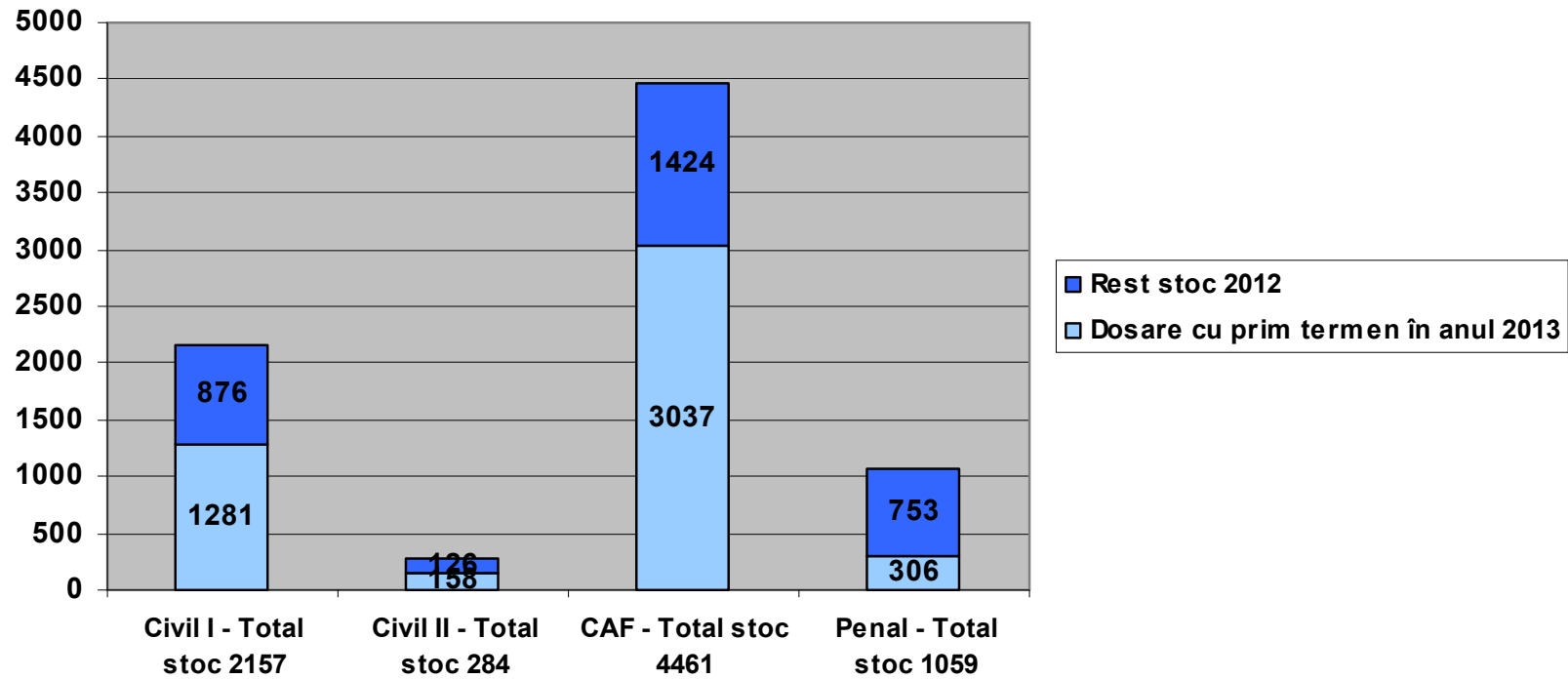
Dosare intrate în 2012



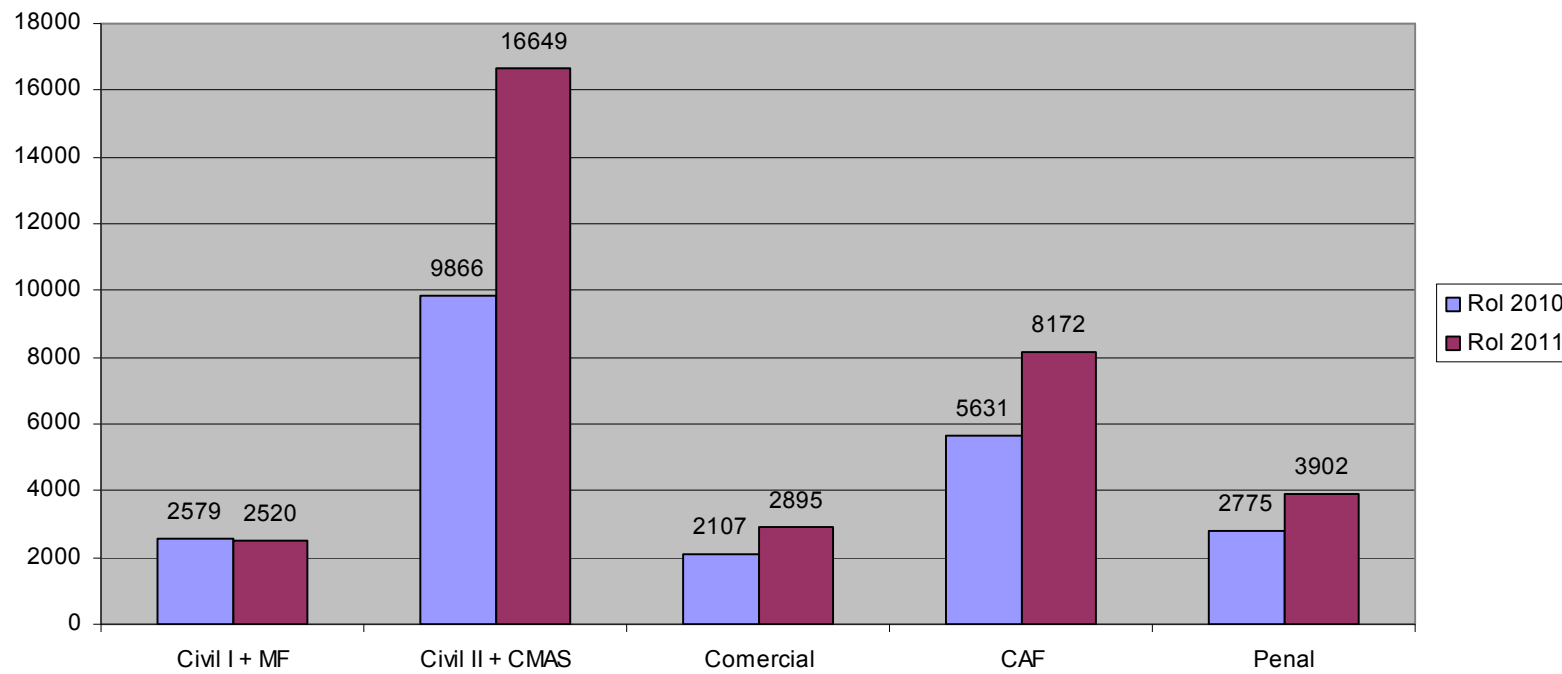
Stoc preluat din anul 2011
Pondere dosare cu prim termen în anul 2012



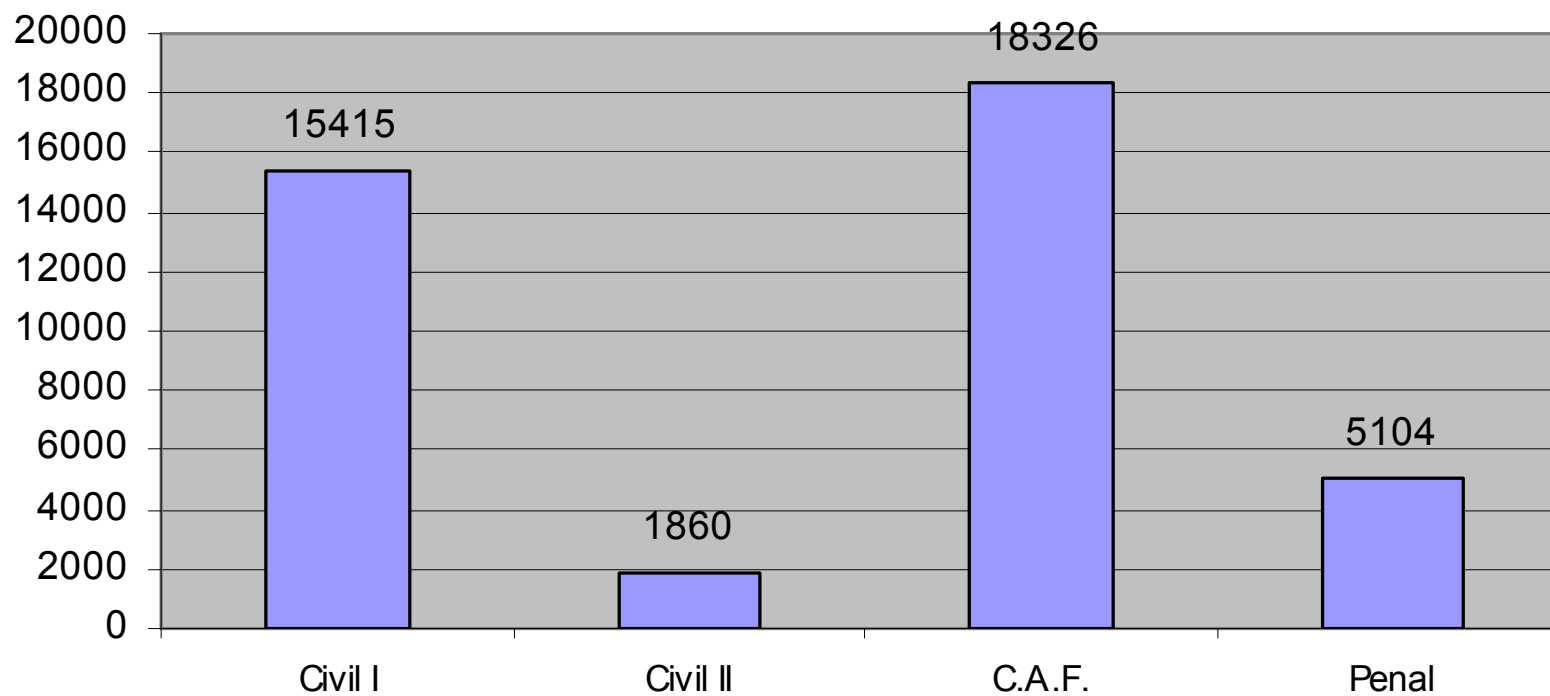
Stoc la sfârșitul anului 2012
Pondere dosare cu prim termen în anul 2013



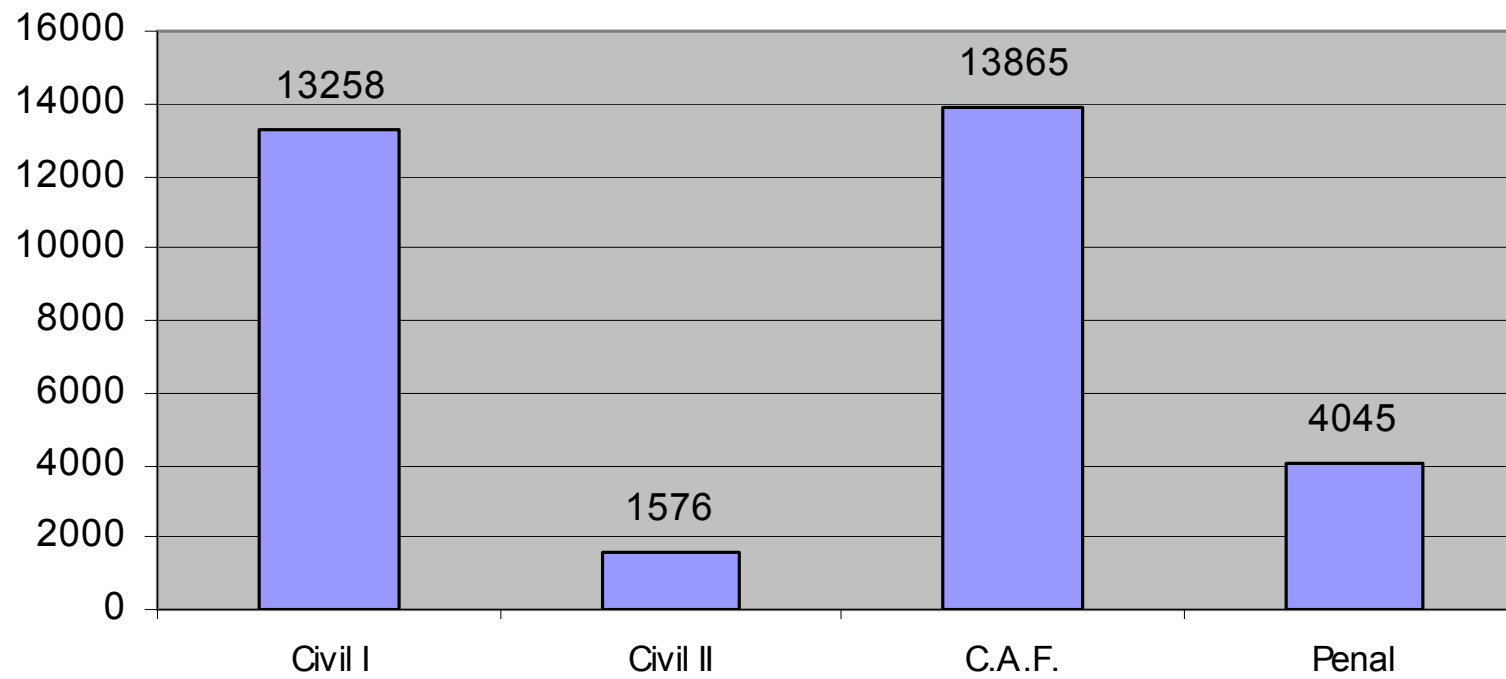
Volum de activitate - Cauze pe rol
- situație comparativă 2010 - 2011 -



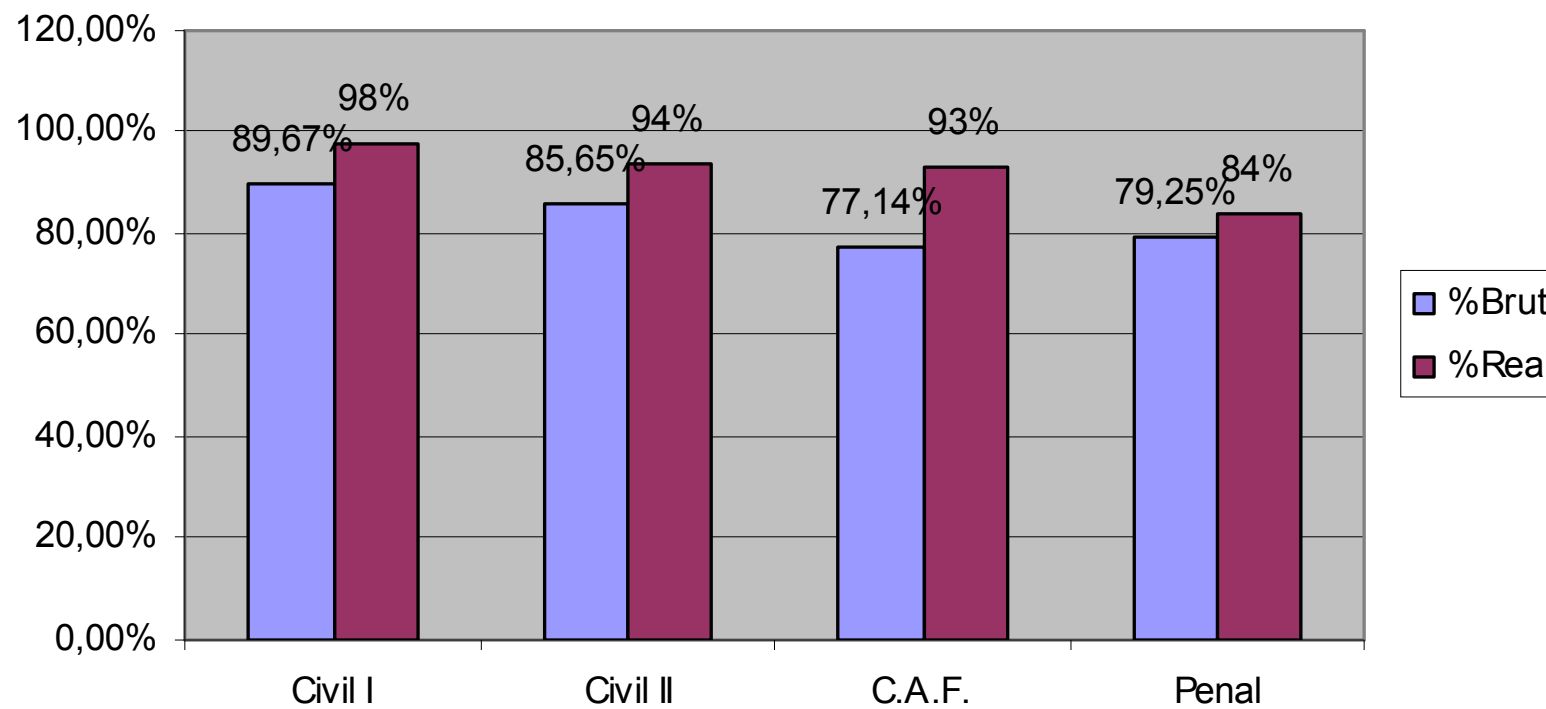
Total cauze pe rol 2012



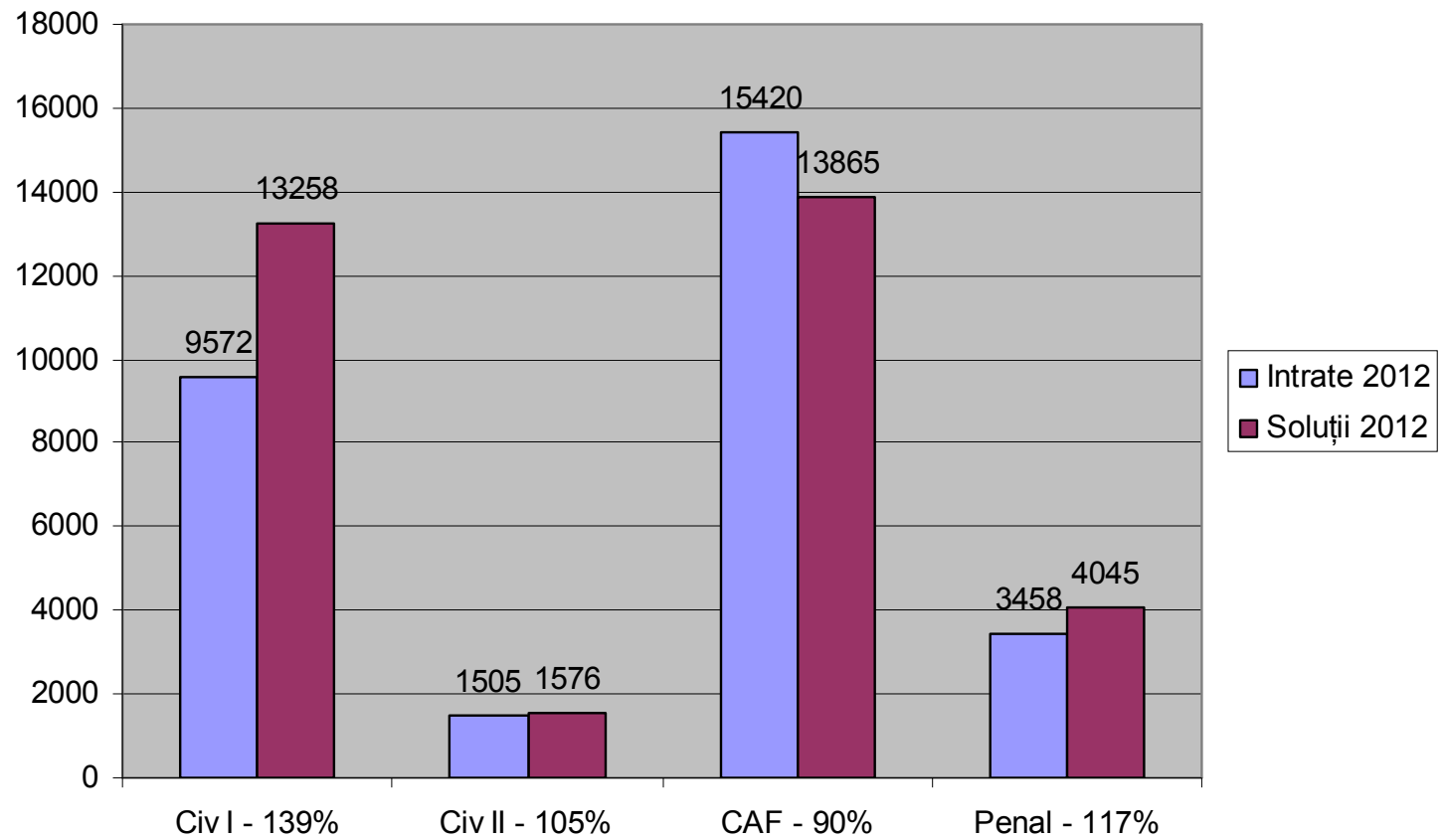
Cauze soluționate în anul 2012



Operativitatea soluționării cauzelor 2012



Rata de soluționare a dosarelor 2012



Dosare in stoc 2012 mai vechi de 1 an

